

- TRENCH BACKFILL / BEDDING NOTES

ENGINEERING STANDARDS 2022			
REVISIONS		ENGINEERING DIVISION CITY OF POMPANO BEACH	TRENCH BACKFILL / BEDDING
BY	DATE		
SCALE: N.T.S.			DATE: <u>JUNE 2022</u> DWG. NO. 203-3

- | <u>SIEVE SIZE</u> | <u>PERCENTAGE PASSING</u> |
|-------------------|---------------------------|
| 2 INCH | 100 |
| 1-1/2 INCH | 90-100 |
| 1 INCH | 20-55 |
| 3/4 INCH | 0-15 |
| NO. 200 | 0-3 |

TRENCH BACKFILL / BEDDING NOTES

ENGINEERING STANDARDS 2022				
REVISIONS		ENGINEERING DIVISION CITY OF POMPANO BEACH	TRENCH BACKFILL / BEDDING	
BY	DATE			
SCALE: N.T.S.			DATE: JUNE 2022 DWS. NO. 203-4	



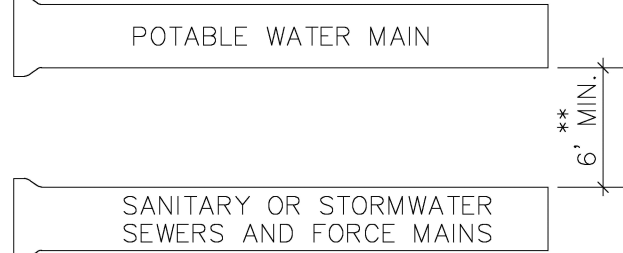
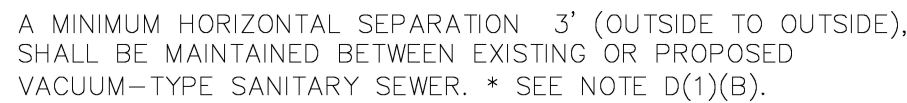
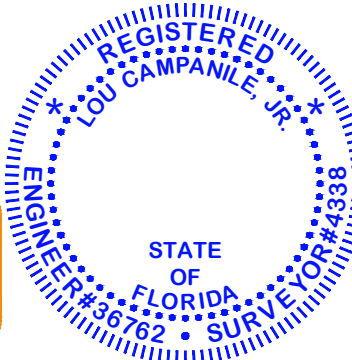
- # SEWER PIPE IDENTIFICATION

ENGINEERING STANDARDS 2022			
REVISIONS		ENGINEERING DIVISION CITY OF POMPANO BEACH	SEWER PIPE IDENTIFICATION
BY	DATE		
S.S.	01/30/12		DATE: JUNE 2022 DWG. NO. 207-1
		SCALE: N.T.S.	



- # UTILITY PIPE AND MARKER BALLS LOCATION

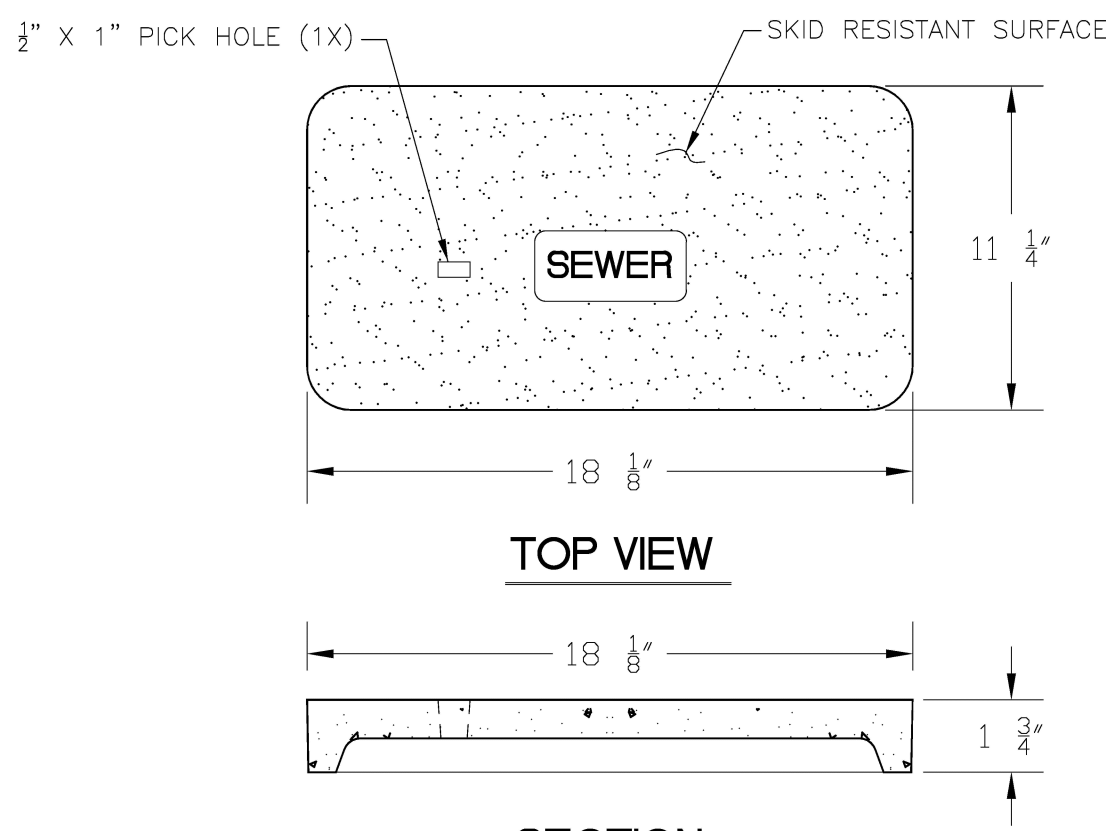
ENGINEERING STANDARDS 2022			
REVISIONS		ENGINEERING DIVISION CITY OF POMPANO BEACH	UTILITY PIPE AND MARKER BALLS LOCATION
BY	DATE		
S.S.	01/30/12		
SCALE: N.T.S.			DATE: <u>JUNE 2022</u> DWG. NO. 208-1



A MINIMUM HORIZONTAL SEPARATION OF 6' (OUTSIDE TO OUTSIDE), SHALL BE MAINTAINED BETWEEN POTABLE WATER MAINS AND EXISTING OR PROPOSED GRAVITY-OR PRESSURE TYPE SANITARY SEWER, WASTEWATER FORCE MAIN OR NOT REGULATED REUSE WATER MAIN. ** SEE NOTE D(1)(C).

MINIMUM HORIZONTAL SEPARATION REQUIREMENTS FOR POTABLE WATER, REUSE, STORMWATER AND SEWER LINES

ENGINEERING STANDARDS 2022			
REVISONS		ENGINEERING DIVISION CITY OF POMPANO BEACH	MIN. HORIZONTAL SEPARATION FOR SANITARY SEWER
BY	DATE		
S.S.	01/30/12		
SCALE: N.T.S.		DATE: JUNE 2022 DWG. NO.	209-1



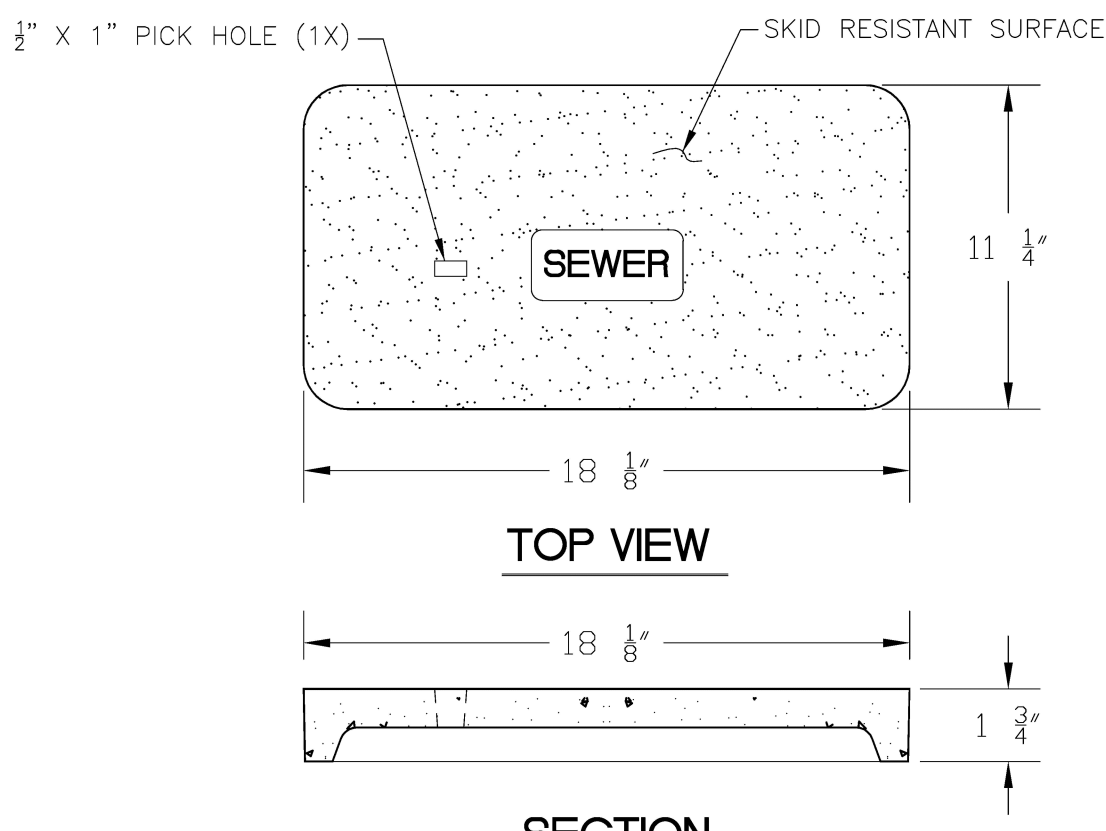
NOTE

1. MATERIAL: FIBERGLASS REINFORCED POLYMER CONCRETE & FIBERGLASS REINFORCED POLYMER
2. COLOR: GREEN
3. LOAD RATING: A8 (ASTM C857)
4. LOGO: SEWER

SEWER BOX AND COVER

PRODUCT RATING - NON TRAFFIC						
LOAD DESIGNATION	DESCRIPTION	DESIGN LOADS			TESTING	
		LIVE LB/WHEEL (2)	LIVE + IMPACT LB/WHEEL	SIDE PSF (3)	LOAD,LBS	SAFETY FACTOR
AASHTO H10	LIGHT TRUCK TRAFFIC	8,000	10,400	N/A	22,568 (4)	2.82

ENGINEERING STANDARDS 2022			
REVISIONS		ENGINEERING DIVISION CITY OF POMPANO BEACH	SEWER BOX AND COVER CDR Part No. WB03-118-12 CDR Part No. WC00-118-02
BY	DATE		
		SCALE: N.T.S.	DATE: JUNE 2022 DWS. NO.
			210-1



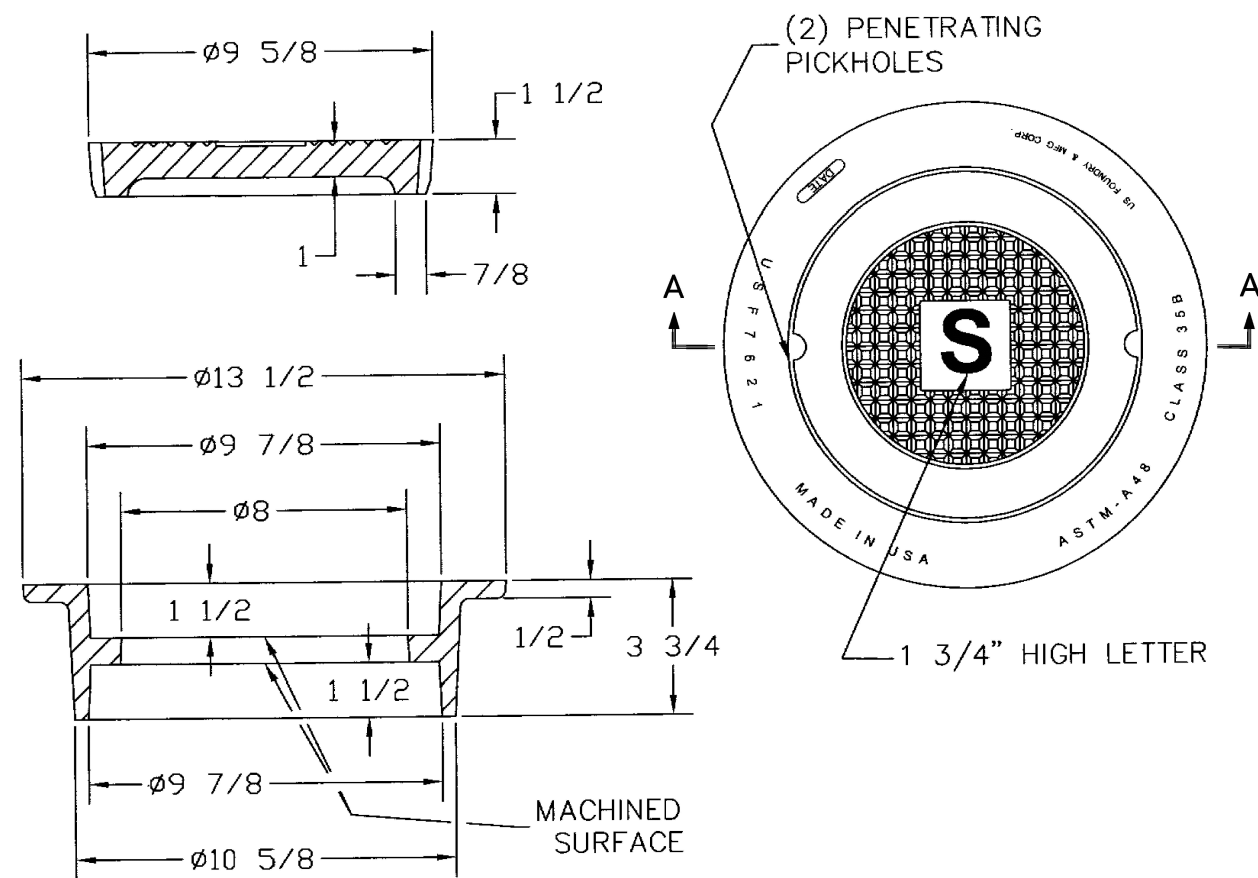
NOTE

1. MATERIAL: FIBERGLASS REINFORCED POLYMER CONCRETE & FIBERGLASS REINFORCED POLYMER
2. COLOR: GREEN
3. LOAD RATING: A8 (ASTM C857)
4. LOGO: SEWER

SEWER BOX AND COVER

PRODUCT RATING - TRAFFIC						
LOAD DESCRIPTION	DESCRIPTION	DESIGN LOADS			TESTING	
		LIVE LB/WHEEL (2)	LIVE + IMPACT LB/WHEEL	SIDE PSF (3)	LOAD,LBS	SAFETY FACTOR
AASHTO H15	MEDIUM TRUCK TRAFFIC	12,000	15,600	N/A	27,000 (5)	2.25

ENGINEERING STANDARDS 2022			
REVISIONS		ENGINEERING DIVISION CITY OF POMPANO BEACH	SEWER BOX AND COVER CDR Part No. WB04-1118-12 CDR Part No. WC02-1118-02
BY	DATE		
SCALE: N.T.S.		DATE: JUNE, 2022 DWS. NO.	210-2



NOTE
MATERIAL: Gray Cast Iron
ASTM-A48 Class 35B

SEWER BOX AND COVER - HEAVY TRAFFIC

ENGINEERING STANDARDS 2022			
REVISIONS		ENGINEERING DIVISION CITY OF POMPANO BEACH	SEWER BOX AND COVER HEAVY TRAFFIC
BY	DATE		
S.S.	12/06/18		
SCALE: N.T.S.			DATE: JUNE 2022 DWG. NO. 210-3